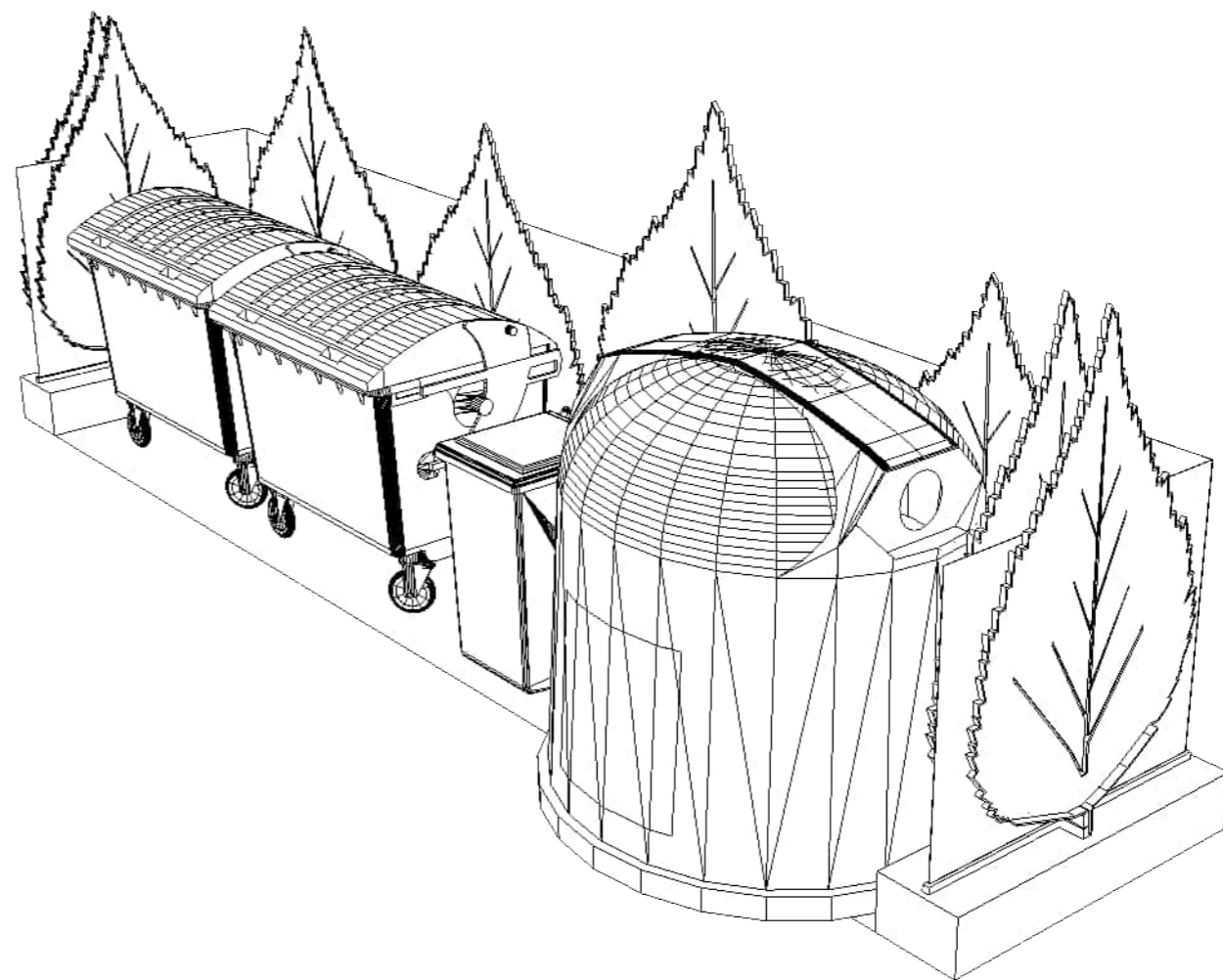
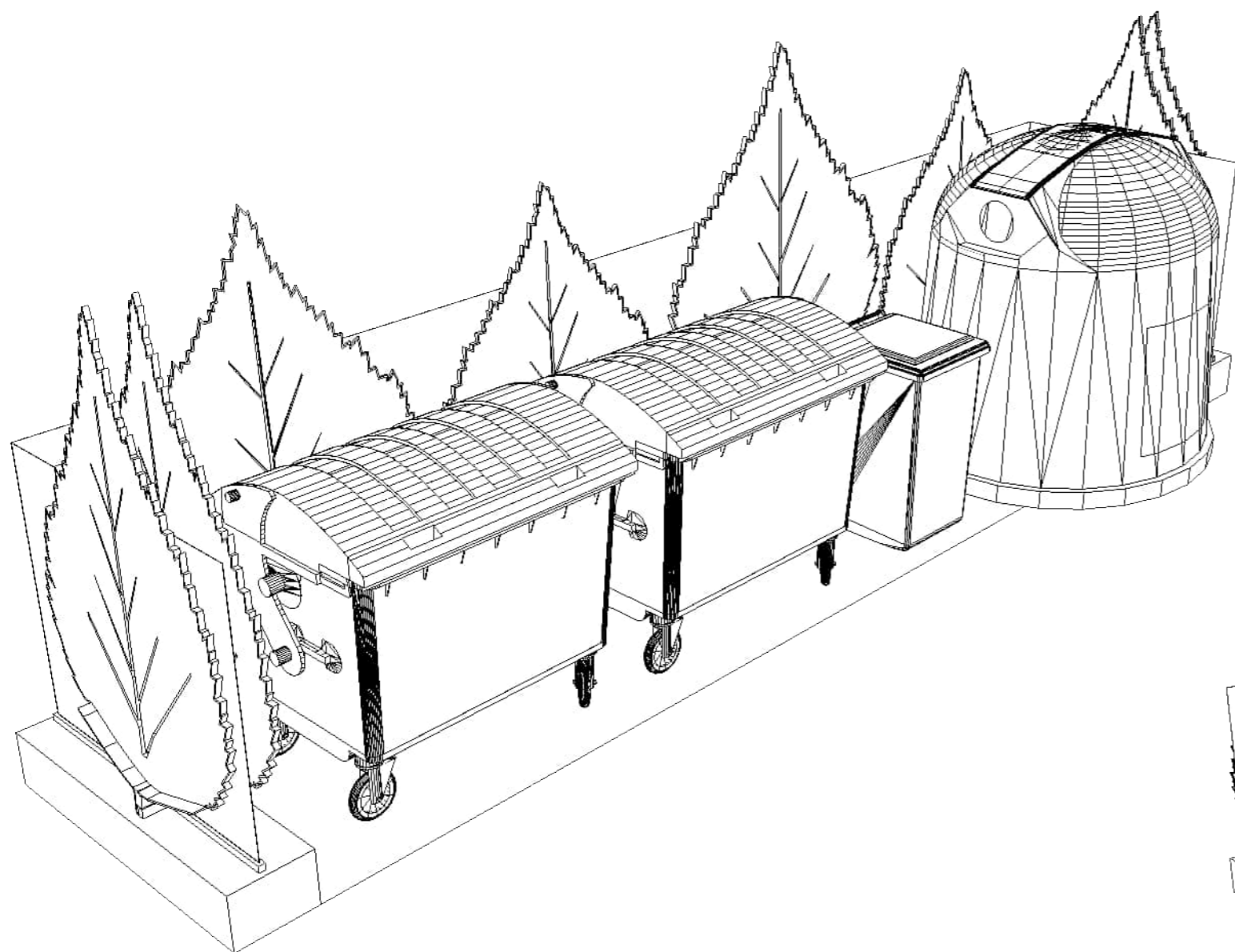
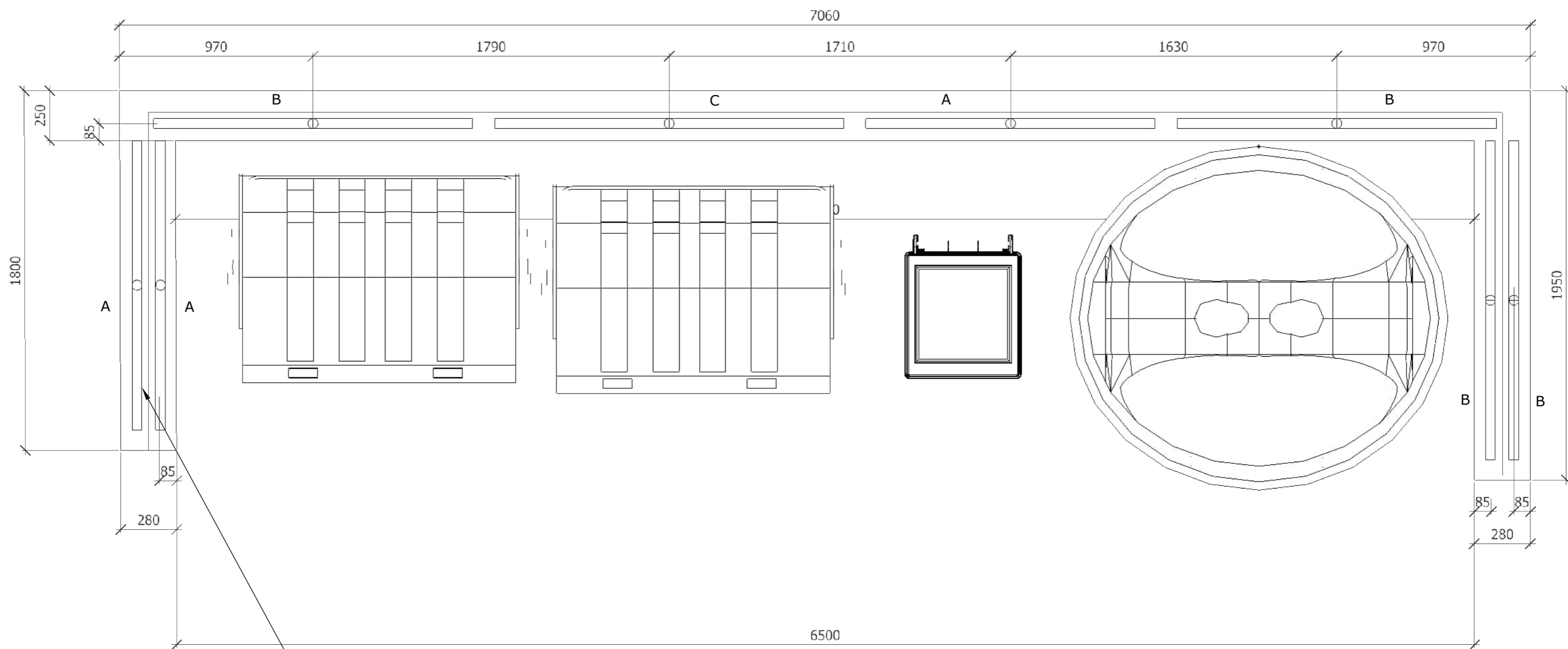




STÁVAJÍCÍ STAV





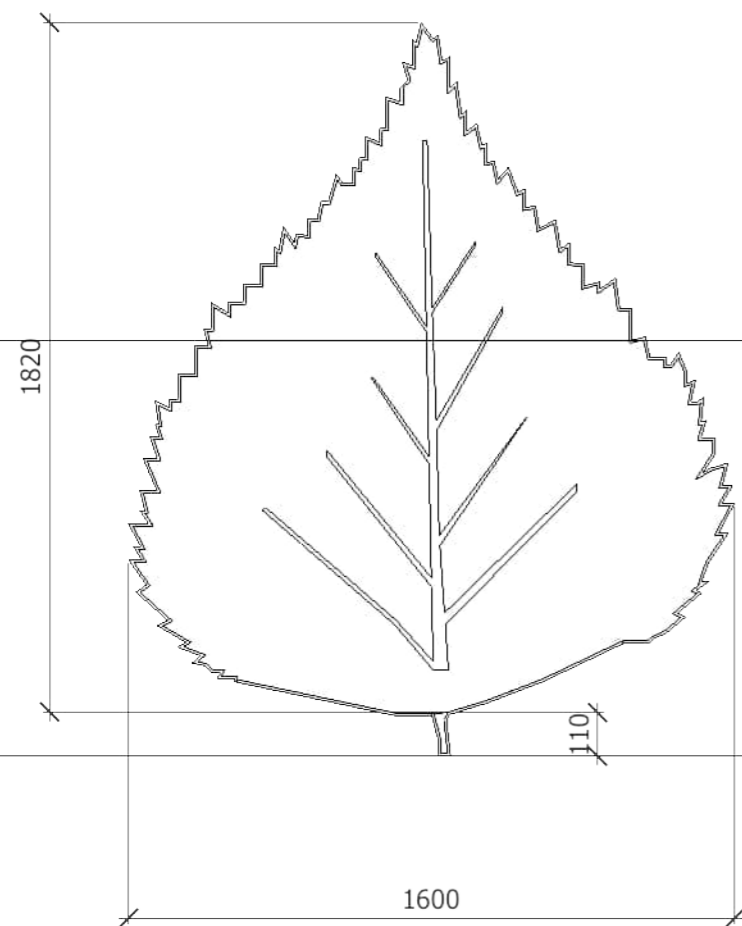
• Boční stěny - zdvojené listy
 Spojované dohromady spolu s tahokovem
 Přes širší podložky a závit

Listy - ocelový plech pozinkovaný

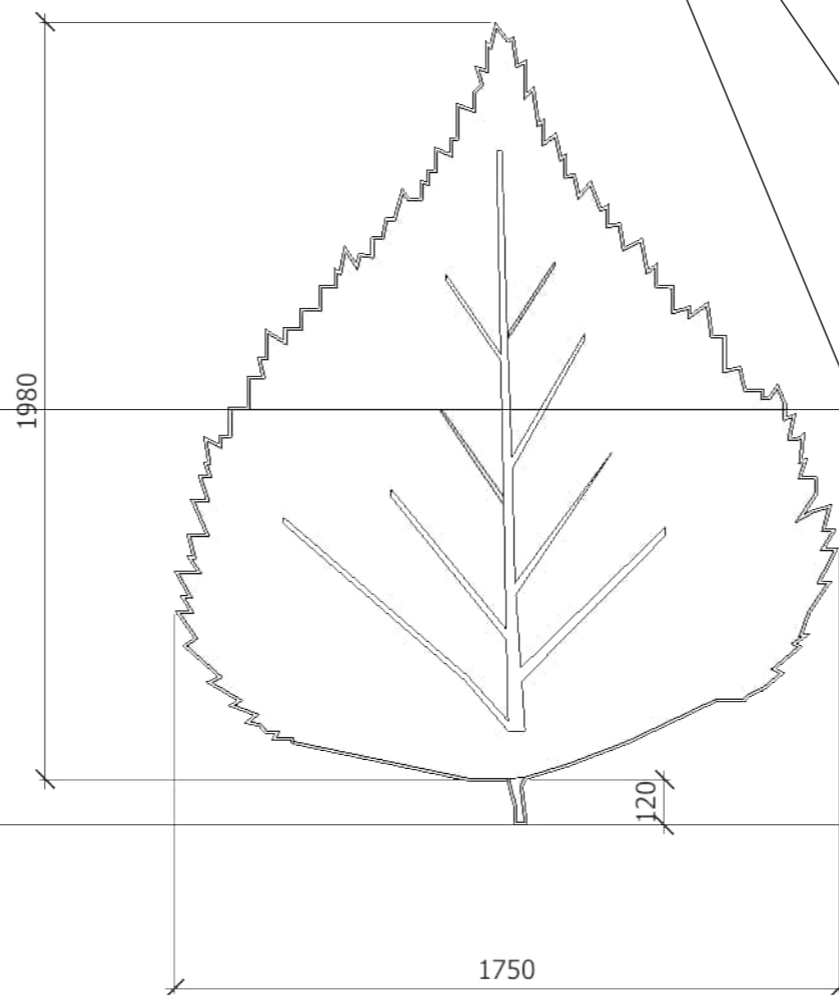
Ztužující pásek 30mm

Tahokov v. 1100mm

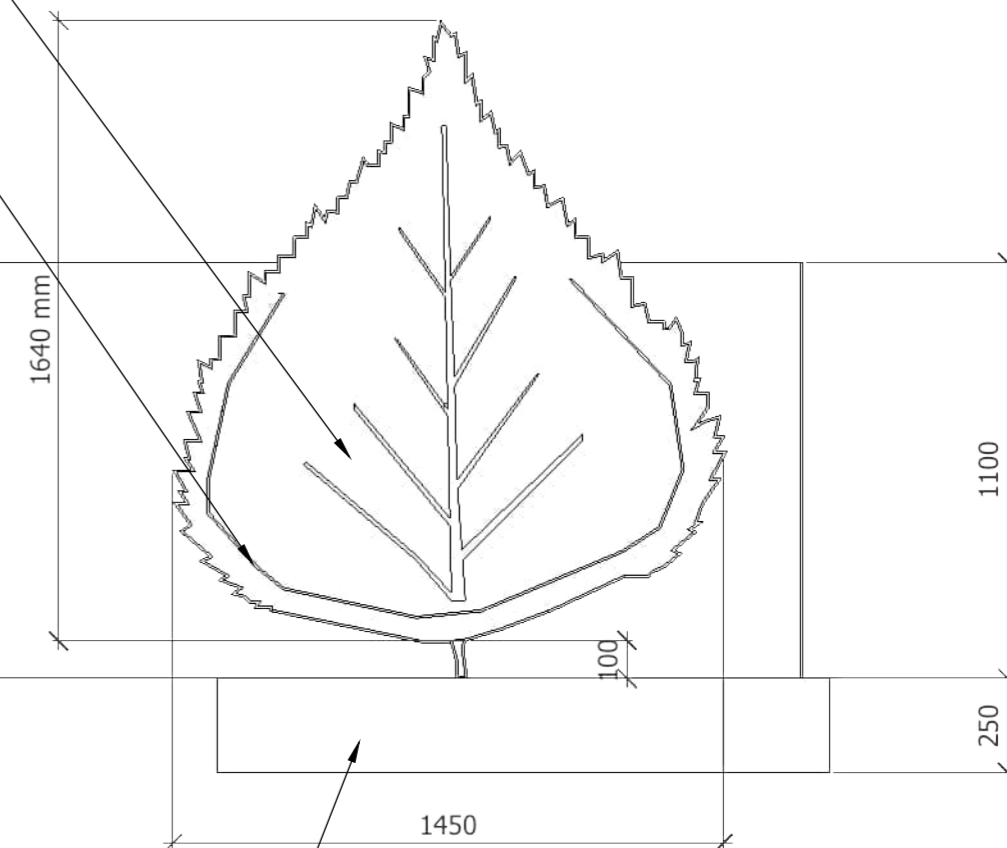
Betonová podezdívka v. 250mm



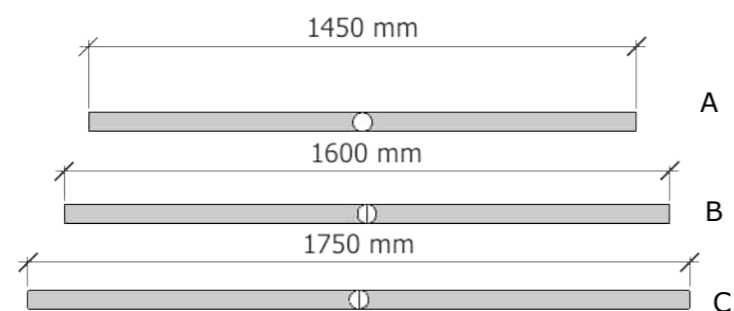
List B

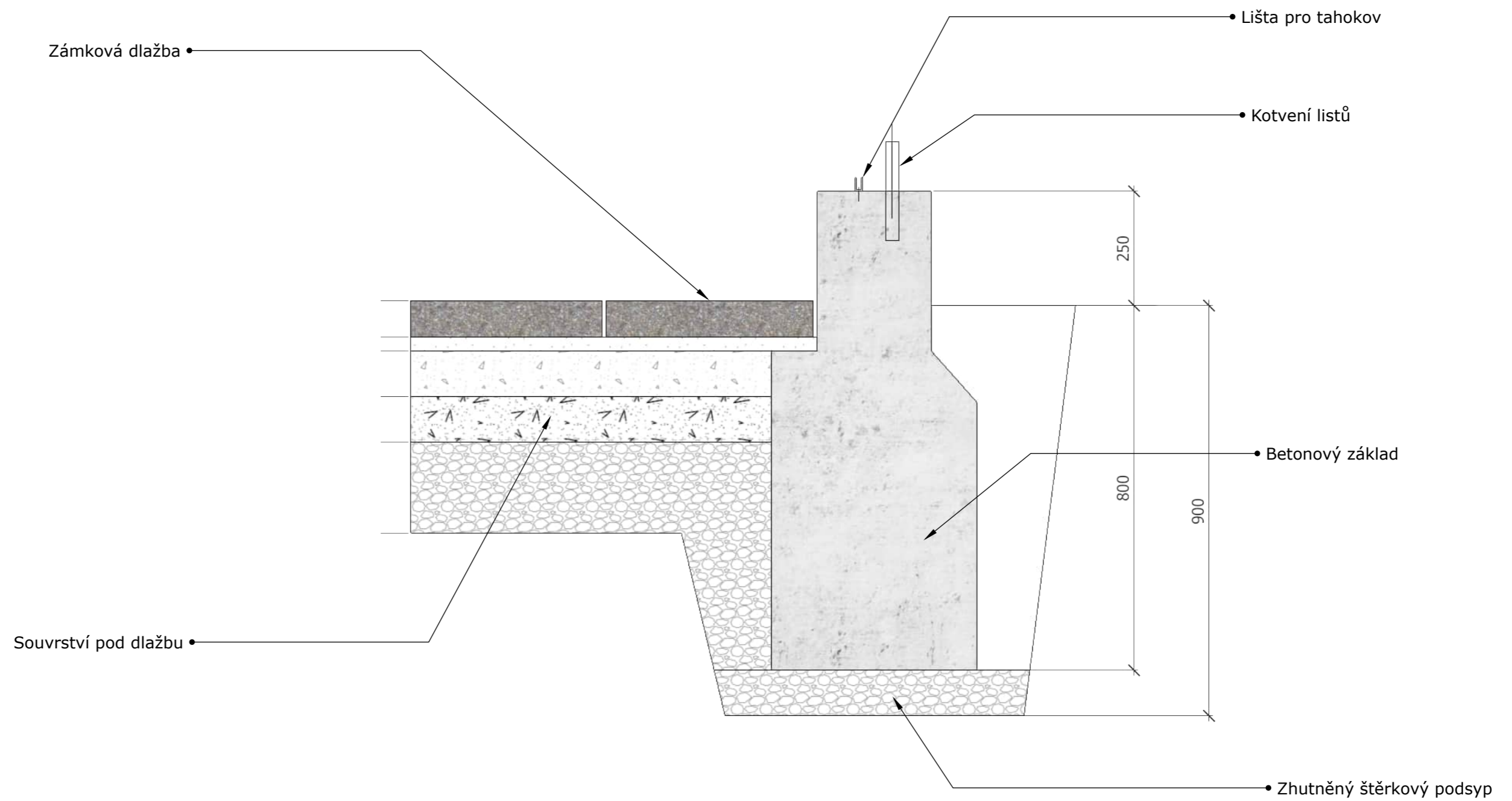


List C



List A





Hloubka založení bude posouzena zhotovitelem
Podle podmínek na místě